

D/B PERFORMANCE Spec Sheet



Heavy Lift Construction Support Vessel Particulars

Length (Overall)	394 ft (120.13 m)
Breadth Molded	104 ft (31.71 m)
Depth Main Deck	24 ft (7.32 m)
Min Operating Draft	9 ft (2.74 m)
Designed Operating Draft	18 ft (5.5 m)
Registry (Flag)	Vanuatu
Year Built	2005
Accommodations	272 POB
Free Deck Area	21,993 sq / ft
Helideck Dimensions	75 ft (22.87 m) x 75 ft (22.87 m)
Helideck Rating	18,600 lbs

Derrick Crane

- Make	Huisman Mast Crane
- Main Hook Height	239 ft (72.87 m)
- Auxiliary Hook Height	297 ft (90.55 m)
- Full Revolving Lift Capacity	880 ST @ 87.5 ft (800 mt @ 26.70 m)
- Auxiliary Lift Capacity	132 ST @ 114 ft (120 mt @ 35 m)

Utility Crane

- Make	Manitowoc
- Model	Triple 7, Series 2
- Type	Crawler
- Capacity	100 ST (91 mt)
- Boom Length	130 ft (39.63 m)

Machinery

- Main Generators	(5) Leroy Omer, 590 kW, 480V AC, 60Hz, 3 Phase
- Generator Engines	3412 Caterpillars
- Emergency Generators	3056 Caterpillar 99 kW, 480 V AC, 60 Hz
- Water Makers	18,000 gallons (68 m3)/day

Mooring Equipment

- Winches	(8) ME Marine Engineering, Single Drum-HYD; 150 Ton brake holding
- Wire Size	Max 2 in. Diameter
- Wire Length	Max 5,000 ft
- Anchors	8

Capacities

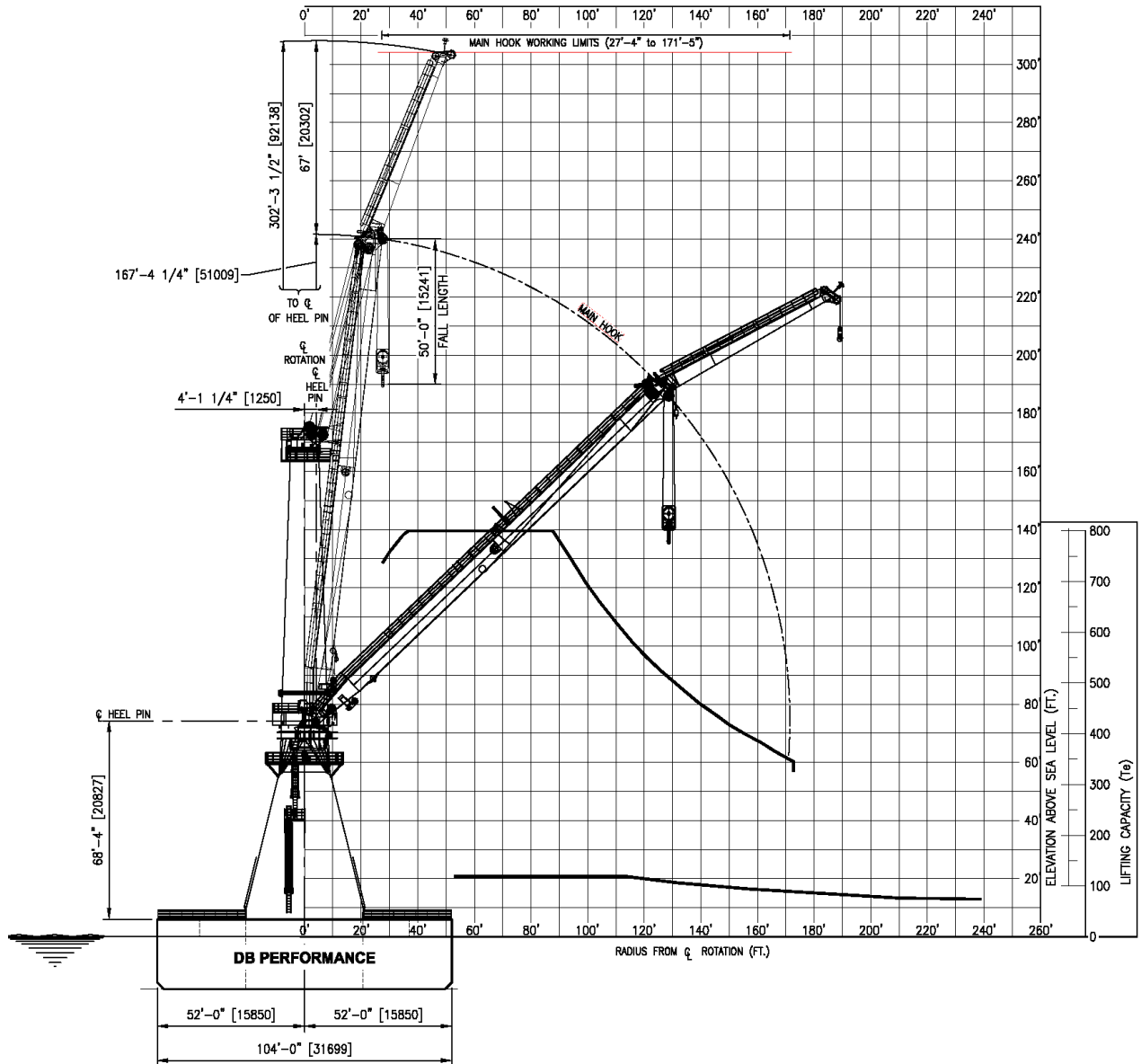
32503 Tamina Rd. Bldg B-1, Magnolia, TX 77354

- | | |
|-----------------|--|
| - Fuel | 325,824 gal (1,233.00 m ³) |
| - Potable Water | 391,010 gal (1,480.00 m ³) |
| - Ballast Water | 4,226,752 gal (16,000 m ³) |

Communication Systems

- Phones / Internet
- Radios

Rignet
VHF





32503 Tamina Rd. Bldg B-1, Magnolia, TX 77354