



SPECIFICATION SHEET

MAIN PARTICULARS

Length	400 ft (121.92 m)
Breadth	120 ft (36.57 m)
Depth	25 ft (7.62 m)
Max Operating Draft	16.40 ft (5.00 m)
Min Operating Draft	8.5 ft (2.60 m)
Gross Tonnage	11,524
Net Tonnage	3,457
Registry (Flag)	Vanuatu
Year Built	1997
Accommodations	104 POB

DERRICK CRANE

Make	Kone Cranes (Designed by Gusto Eng)
Main Hook Height	206 ft (62.78 m)
Auxiliary Hook Height	273 ft (83.21 m)
Whip Hoist Height	313 ft (95.40 m)
Full Revolving Lift Capacity	1,322 ST @ 98 ft (1,200 mt @ 29.87m)
Auxiliary Lift Capacity	275 ST @ 262 ft (250 mt @ 79.86 m)
Whip Hoist Capacity	55 ST @ 310 ft (50 mt @ 94.50 m)

CAPACITIES

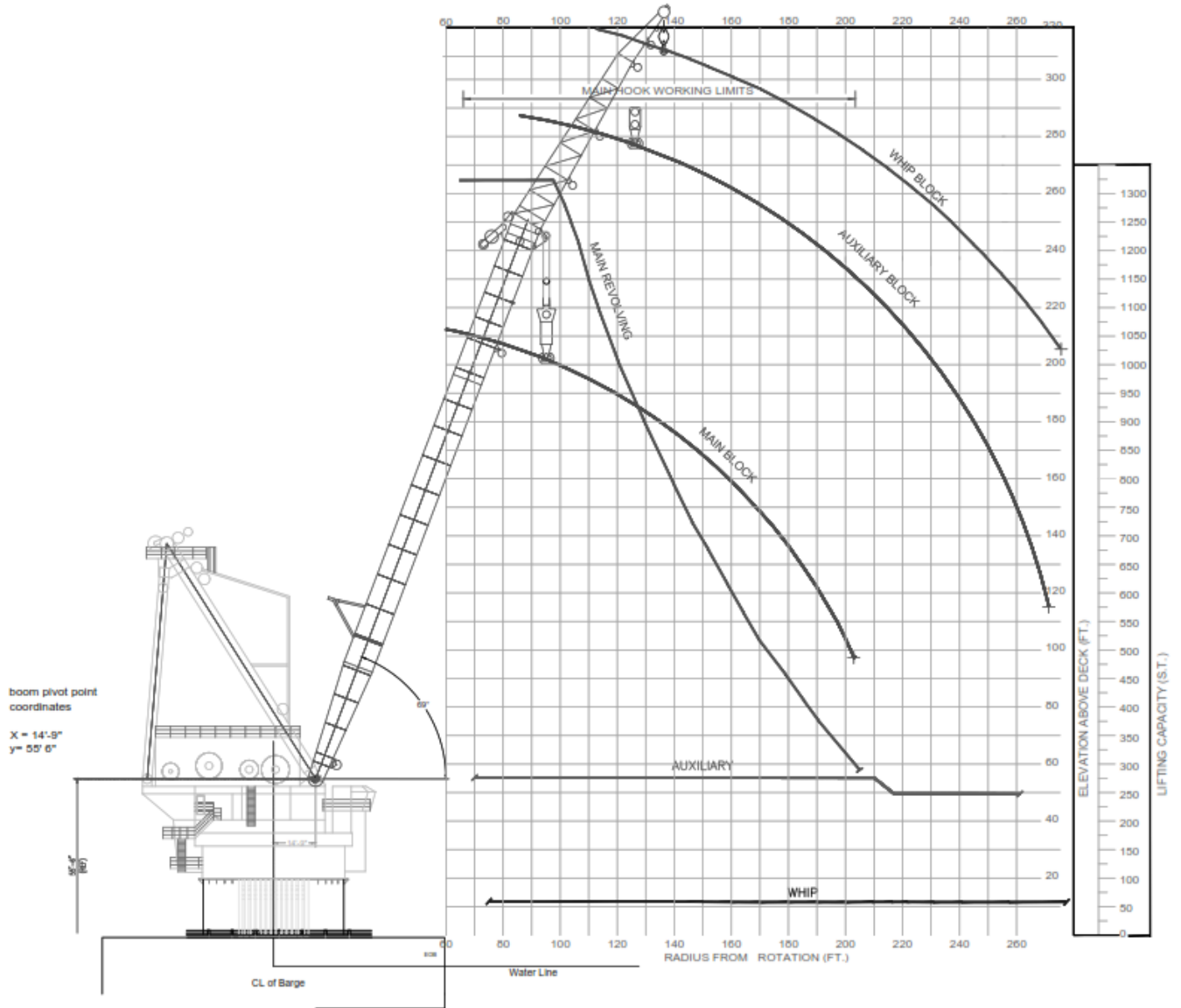
Fuel	270,000 gal
Potable Water	160,000 gal
Ballast Water	603,880 gal

MACHINERY

Main Generators	(3) Cummings KTA 50 1500 KW Onan Generators
Emergency Generators	(1) Cummings N-14 350 KW Onan Generator
Water Maker	13,450 Gallons/Day

MOORING EQUIPMENT

Winches	(4) Double Drum Skagit winches, 150 ST brake holding
Wire Size	2 in. Diameter
Wire Length	5,000 ft
Anchors	8 Delta Flipper, 16,000lbs ea



Note: The Main Block capacity in the Sub Sea configuration is 650 S Tons and the block can be lowered to approximately 250' below the W.L. at 100' radius.